



Date: 18/02/2025 Author: VORM TRAFFIC Project: PAVEMENT TESTING

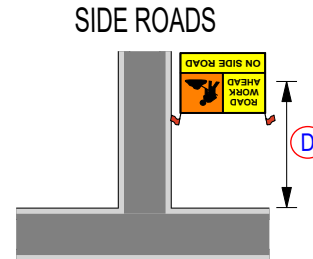
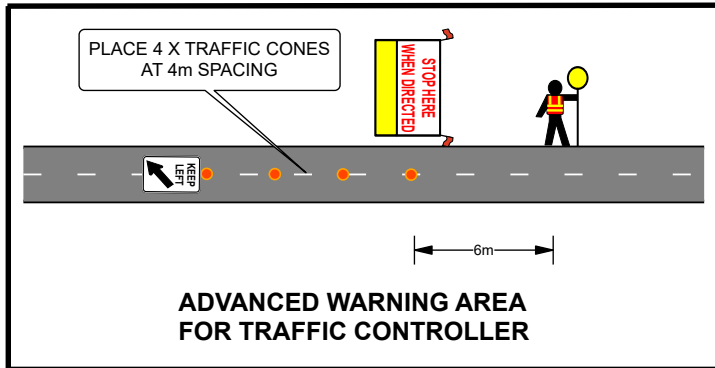
Comments:  
HAMILTON TOWNSHIP  
CLIENT: GTS  
CONTACT: CARY 0402 856 878

Plan Drawn by  
Stuart Draper



All traffic management works and control devices shall be in accordance with:

1. OHS Act 2004
2. OHS Regulations 2017
3. Austroads Guide to Temporary Traffic Management 2021
4. Australian Standard AS1742.3 - 2019, Manual of uniform traffic control devices - Traffic control for works on roads.
5. Worksite Safety Traffic Management - Code of Practice (CoP) 2023
6. Australian Standards AS/NZS 4602 - Risk Management
7. Australian Standards AS/NZS 4602 - High Visibility Safety Garments
8. Road Management Act 2004 Code of Practice Worksite Safety - Traffic Management



SPEED OF TRAFFIC	DIMENSION <b>D</b>
50km	15m
60km	45m
Greater than 60km	Equal to speed of traffic in kph

