



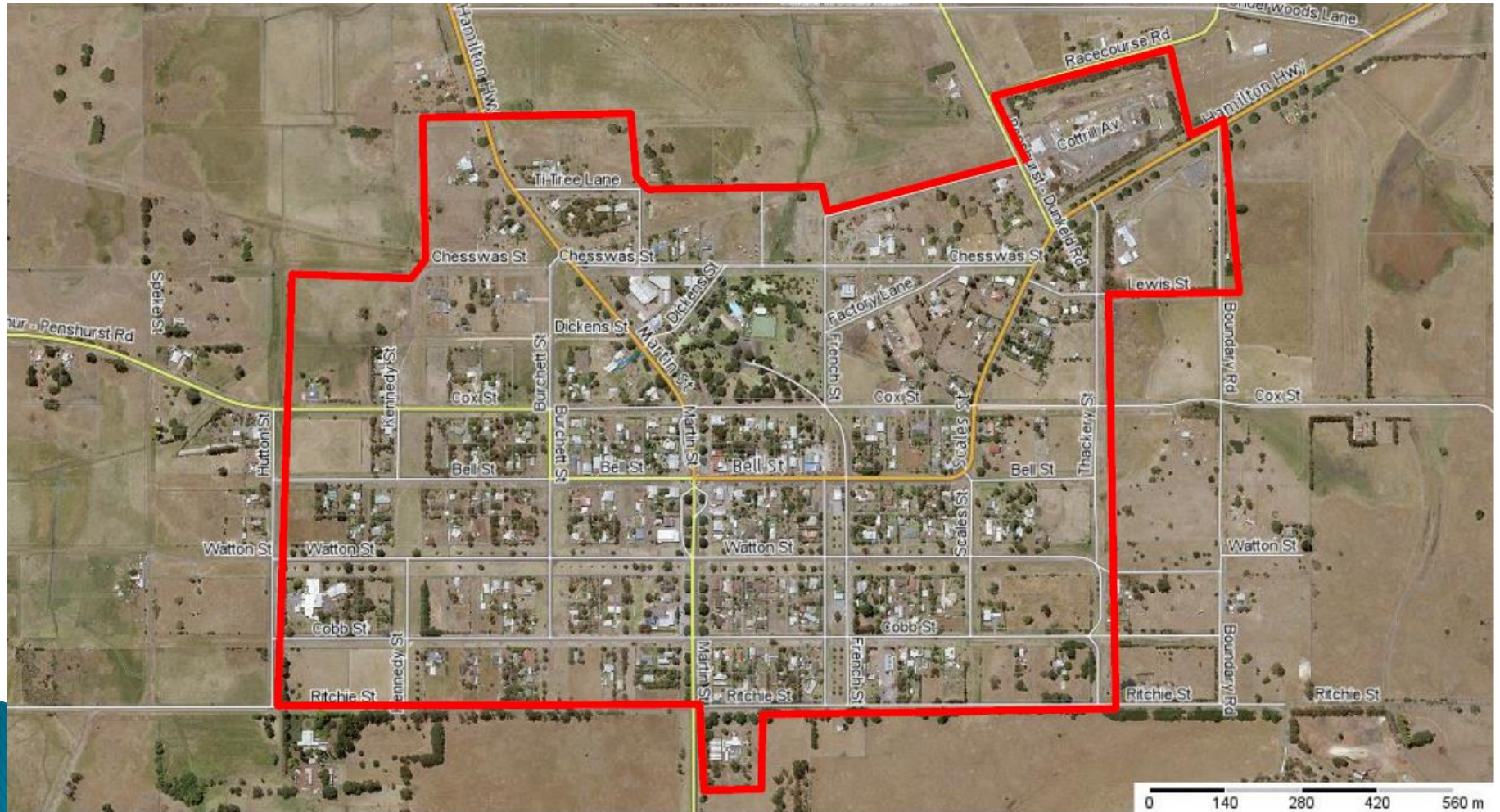
Penshurst Onsite Wastewater Inspection Program

*Advance Penshurst Meeting
28 October 2015*

Potential impacts of failing systems

Human Health	Environmental	Social
Spread of disease (human & animal)	Pollution of surface water	Decreased amenity
Spread of minor illnesses	Pollution of groundwater	Odour
Harbourage of vermin (mosquitoes – transmit arboviruses)	Degradation of soils	Impacts on infrastructure (stormwater)
	Degradation of native vegetation	Financial for system owners
	Increased weed growth	Impact on economic development

Wastewater Management System Inspection Area



Wastewater Inspection Parameters

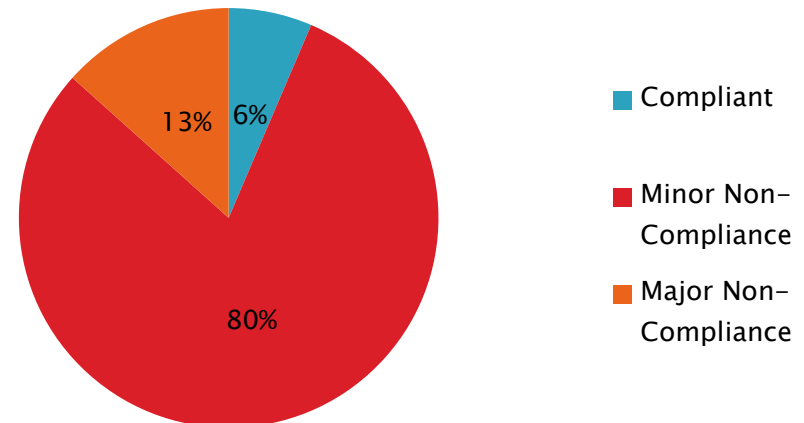
- **202** systems were inspected within the project area.
- Each property was assessed for a number of parameters;
- **Structural features** (e.g. Septic tank lids, condition of trench & pipework)
- **Physical condition** (e.g. Sludge levels, storm water management, soil type, bores)
- **Maintaining wastewater onsite** (e.g. effluent entering storm water)
- **Maintenance provision** (e.g. Vegetation, sludge pump out & plumbing history)



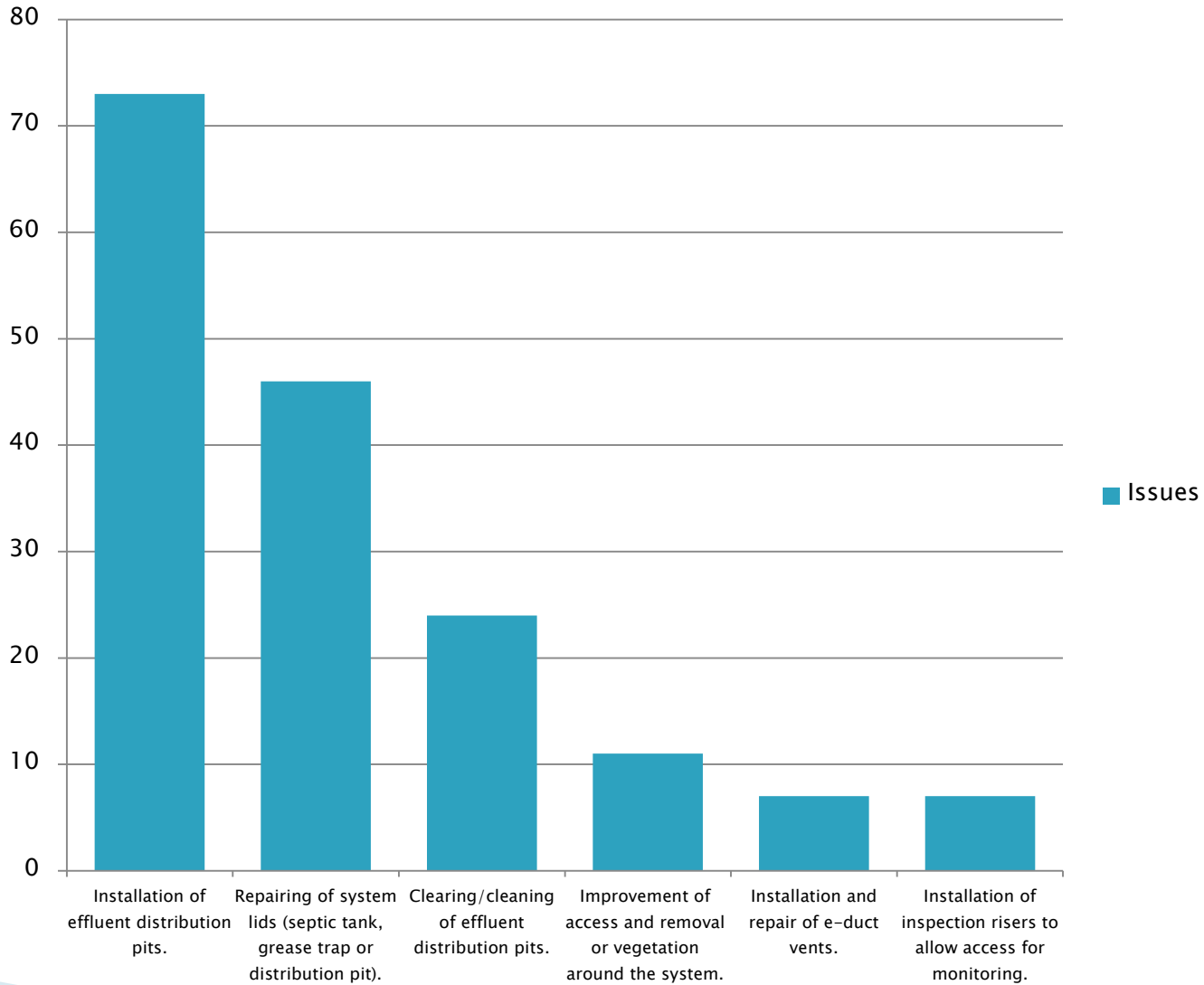
Results

- Properties were classified into one of three categories;
 - **Compliant** – meets current standards
 - **Minor Non-compliance** – simple, relatively low cost repairs/maintenance required
 - **Major Non-compliance** – major repairs required (i.e. new trench, new tank)
- Inspections indicated;
 - 13 Compliant
 - 162 Minor Non-compliance
 - 27 Major Non Compliance

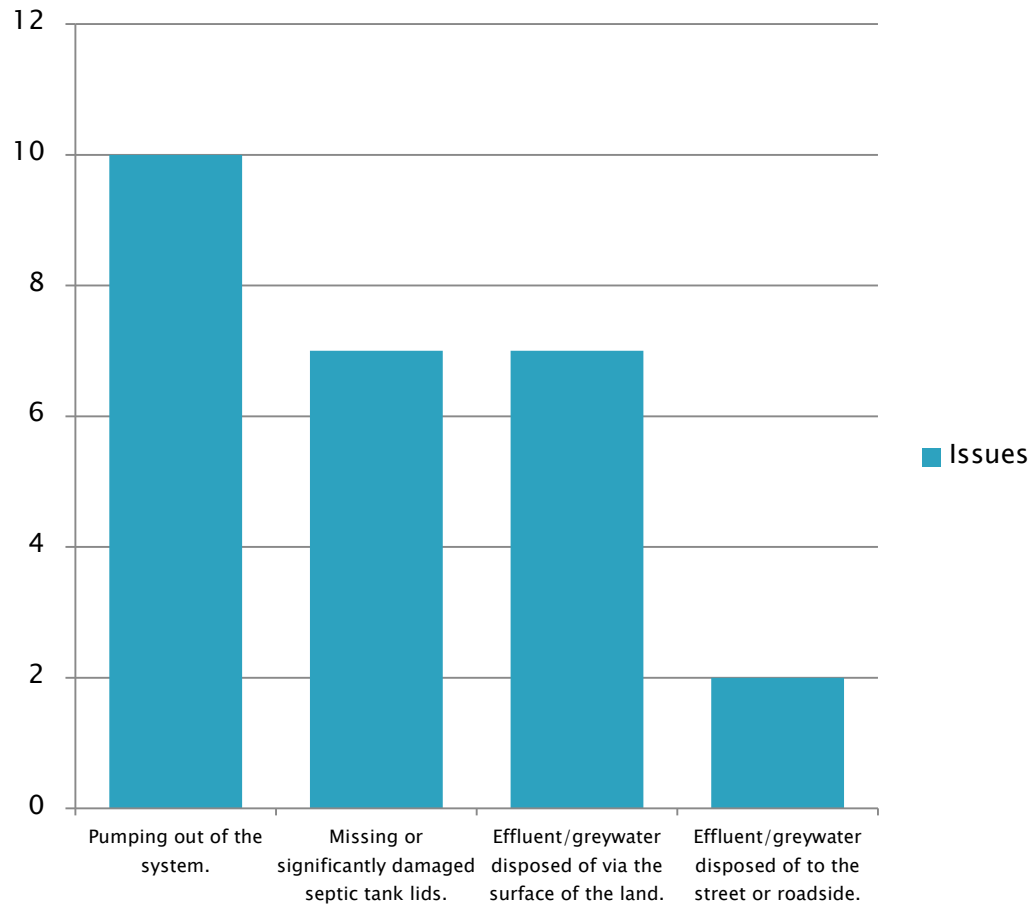
Compliance of Systems



Common Minor Non-compliances



Common Major Non-compliances



Where to from here?

- Information collected will assist Council & community in future decision making in the management of wastewater in Penshurst.
- Report prepared detailing the findings of the inspections.
- Information updated on Council databases to reflect the presence of various systems and system conditions.
- Continued improvements to systems



Further Information

Southern Grampians Shire Council
Environmental Health
1 Market Place, Hamilton 3300
(03) 5573 0256

www.sthgrampians.vic.gov.au
Council@sthgrampians.vic.gov.au

Environmental Protection Authority
(EPA) - onsite wastewater

www.epa.vic.gov.au/your-environment/water/onsite-wastewater

EPA Code of Practice Onsite
Wastewater Management -
Publication no. 8913, February 2013
<http://www.epa.vic.gov.au/~media/Publications/891%203.pdf>

Legislation

www.austlii.edu.au/au/vic/

Questions

